

## MULTISCREEN™ STABLE CELL LINE HUMAN RECOMBINANT MGLUR2 RECEPTOR

### Data sheet

#### PRODUCT INFORMATION

**Catalog Number:** CG1189a

**Lot Number:** CG1189a-041825

**Quantity:** 1 vial ( $4 \times 10^6$ ) frozen cells

**Freeze Medium:** Cellbanker 2

**Host cell:** HEK293T Gq $\alpha$ 5

**Transfection:** Expression vector containing full-length human GRM2 cDNA with FLAG tag sequence at N-terminus

**Recommended Storage:** Liquid nitrogen upon receiving

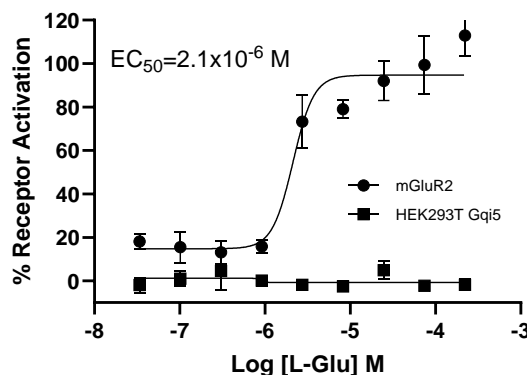
**Propagation Medium:** DMEM with GlutaMAX (Gibco 10566), 10% FBS (dialyzed), 2 mM sodium pyruvate, 1  $\mu$ g/mL puromycin, 50  $\mu$ g/mL hygromycin

**Stability:** In Progress

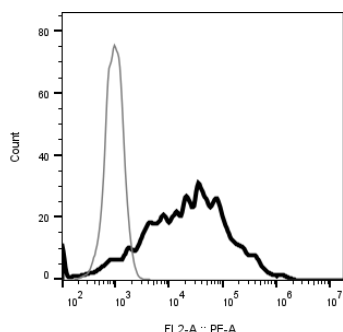
**Background:** The neurotransmitter L-glutamate interacts with both ionotropic and metabotropic receptors. The metabotropic glutamate receptors (mGluRs), which are G protein-coupled receptors, have been divided into 3 groups on the basis of sequence homology, putative signal transduction mechanisms, and pharmacologic properties. Group II and group III mGluRs are linked to the inhibition of the cyclic AMP cascade, but differ in their agonist selectivity. The mGluR2 is a member of group II metabotropic glutamate receptors.

**Application:** Functional assays

**Figure 1**



**Figure 2**



**Figure 1.** Dose-dependent stimulation of calcium flux upon treatment with ligand, measured with MULTISCREEN™ Calcium 1.0 No Wash Assay Kit (Multispan MSCA01). **Figure 2.** Receptor expression on cell surface measured by flow cytometry (FACS) using an anti-FLAG antibody. Thin line: parental cells; thick line: receptor-expressing cells.

#### References:

Flor *et al.* (1995) Molecular cloning, functional expression and pharmacological characterization of the human metabotropic glutamate receptor type 2. *Eur J Neurosci* 7:622-629.

**FOR RESEARCH USE ONLY.**

© 2005 Multispan Inc. All rights reserved. No part of this document may be reproduced in any form without prior permission in writing.

26219 Eden Landing Road, Hayward, California 94545-3718 Phone: (510) 887-0817 [info@multispaninc.com](mailto:info@multispaninc.com)