

MULTISCREEN™ MEMBRANE PREPARATION HUMAN RECOMBINANT SECRETIN RECEPTOR

Data sheet

PRODUCT INFORMATION

Catalog Number: MC1228-1

Lot Number: MC1228-1-091125

Quantity: 1 vial (17.52 mg/mL; in 1mg, 5mg, or 10 mg)

Packaging Buffer: 20 mM Gly-Gly, 1 mM MgCl₂, 25 mM Sucrose (pH 7.2)

Host cell: CHO-K1

Transfection: Expression vector containing full-length human SCTR cDNA (GenBank Accession Number NM_002980.2) with FLAG tag sequence at N-terminus

Recommended Storage: -80°C upon receiving. Avoid repeated freeze-thaw.

Background: Human secretin receptor (gene name SCTR) is a G-protein-coupled receptor, a member of the class B GPCR subfamily. Secretin receptor binds to peptide secretin and the pituitary adenylate cyclase activating peptide. It was the first receptor that was cloned in the class B family of GPCRs. Secretin receptor is also regulated by peptide hormones from the glucagon hormone family. The receptor activates two distinct intracellular signaling pathways, i.e. the adenylyl cyclase and the phosphatidyl-inositol calcium pathways. Northern blot analysis has shown that the secretin receptor is expressed in pancreas, kidney, small intestine, lung, liver, and in trace levels in the brain, heart, and ovary. Secretin-receptor mRNA is abundant in all gastrinomas, enriched in one specific variant. Knockout of secretin receptor was shown to reduce large cholangiocyte hyperplasia. Studies have also demonstrated the potential use of secretin as a therapy for ductopenic liver diseases.

Application: Functional assays

Figure 1

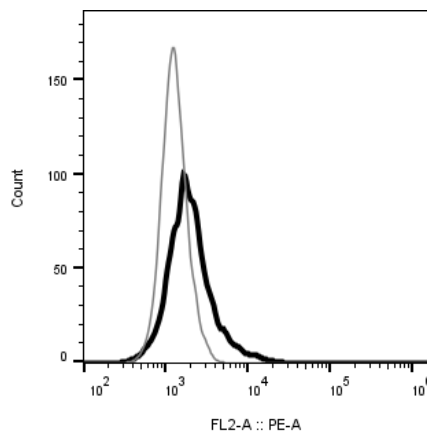


Figure 1. Receptor expression on cell surface measured by flow cytometry (FACS) using an anti-FLAG antibody. Thin line: parental cells; thick line: receptor-expressing cells.

References:

Glaser S et al. (2010) Knockout of secretin receptor reduces large cholangiocyte hyperplasia in mice with extrahepatic cholestasis induced by bile duct ligation. *Hepatology* 52:204-214.

Dong M, Miller LJ. (2002) Molecular pharmacology of the secretin receptor. *Receptors Channels* 8:189-200.

Lam IP, Siu FK, Chu JY, Chow BK. (2008) Multiple actions of secretin in the human body. *Int Rev Cytol.* 265:159-190.

FOR RESEARCH USE ONLY.

Multispan Inc. All rights reserved. No part of this document may be reproduced in any form without prior permission in writing.