



**MULTISPAN**  
Assay Experts in qPCRs and Beyond

## MULTISCREEN™ STABLE CELL LINE MOUSE RECOMBINANT S1P3 RECEPTOR

### Data sheet

#### PRODUCT INFORMATION

**Catalog Number:** CGm1049-1

**Lot Number:** CGm1049-1-081418

**Quantity:** 1 vial ( $2 \times 10^6$ ) frozen cells

**Freeze Medium:** Cellbanker 2 (Amsbio 11891)

**Host cell:** CHO-K1 Gαq5

**Transfection:** Expression vector containing full-length mouse S1P3 cDNA (Genbank Accession Number NM\_010101.4) with FLAG tag sequence at N-terminus

**Recommended Storage:** Liquid nitrogen upon receiving

**Propagation Medium:** DMEM/F12, 10% FBS, 250 µg/mL hygromycin, 10 µg/mL puromycin

**Stability:** Stable for a minimum of 2 months in continuous culture

**Background:** S1P3 (sphingosine 1-phosphate receptor 3) or EDG3 (endothelial differentiation G-protein coupled receptor 3) is a receptor for the lysosphingolipid sphingosine 1-phosphate, a bioactive lysophospholipid that elicits diverse physiological effect on most types of cells and tissues. EDG receptors mediate pro-angiogenic activities, such as endothelial cell proliferation, chemotaxis, and vessel morphogenesis. S1P3, along with S1P1, is required for directing the organization of endothelial cells into capillary networks.

**Application:** Functional assay

Figure 1

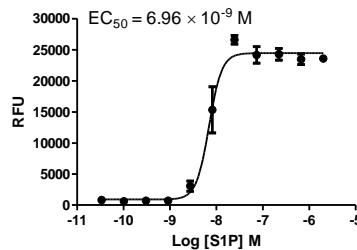
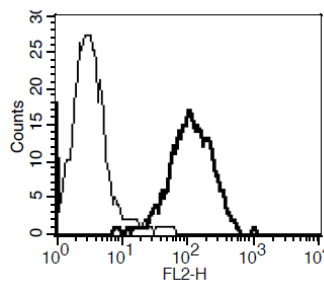


Figure 2



**Figure 1.** Dose-dependent stimulation of calcium flux upon treatment with ligand, measured with Multiscreen™ Calcium 1.0 No Wash Assay Kit (Multispan MSCA01).

**Figure 2.** Receptor expression on cell surface measured by flow cytometry (FACS) using an anti-FLAG antibody. Thin line: parental cells; thick line: receptor-expressing cells.

#### References:

Takuwa *et al.* (2001) Subtype-specific, differential activities of the EDG family receptors for sphingosine-1-phosphate, a novel lysophospholipid mediator. *Mol Cell Endocrinol* 177:3-11.

**FOR RESEARCH USE ONLY.**

Multispan Inc. All rights reserved. No part of this document may be reproduced in any form without prior permission in writing.

26219 Eden Landing Road, Hayward, California 94545-3718 Phone: (510) 887-0817 info@multispaninc.com