

MULTISCREEN™ STABLE CELL LINE MOUSE RECOMBINANT CB2 RECEPTOR (LOW EXPRESSION)

Data sheet

PRODUCT INFORMATION

Catalog Number: Cm1230-1a

Lot Number: Cm1230-1a-083122

Quantity: 1 vial (2 x 10⁶) frozen cells

Freeze Medium: CellBanker 2

Host cell: CHO-K1

Transfection: Expression vector containing full-length mouse CNR2 cDNA (GenBank Accession Number NM_009924.4) with FLAG tag sequence at N-terminus

Recommended Storage: Liquid nitrogen upon receiving

Propagation Medium: DMEM/F12, 10% FBS, 10 ug/ml puromycin

Stability: Stable for a minimum of 2 months in continuous culture

Background: Cannabinoid receptor 2 (CB2) is expressed in peripheral and immune tissues. CB2 in rodents is involved not only in processes of regulation of bone homeostasis but also in cannabinoid-induced central nerve system effects. This receptor can serve as potential therapeutic target in the treatment of various disorders affecting central nerve system or skeletal homeostasis. It was also demonstrated that CB2 receptor is involved in the reduction of chemotherapy-induced allodynia.

Application: Functional assays

Figure 1

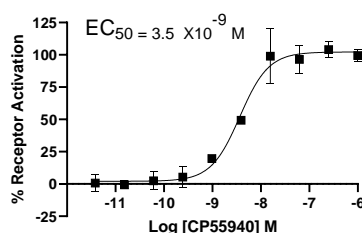


Figure 2

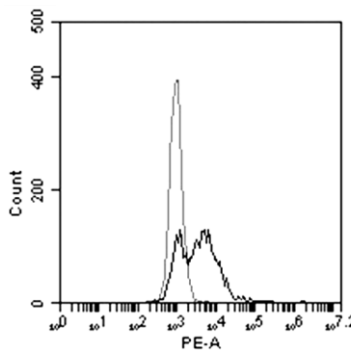


Figure 1. Dose-dependent inhibition of forskolin-stimulated intracellular cAMP level upon treatment with ligand, measured with MULTISCREEN™ TR-FRET cAMP 1.0 No Wash Assay Kit (Multispan MSCM01). **Figure 2.** Receptor expression on cell surface measured by flow cytometry (FACS) using an anti-FLAG antibody. Gray line: parental cells; black line: receptor-expressing cells.

References:

Raphael-Mizrahi and Gabet (2020). The cannabinoids effect on bone formation and bone healing. *Curr. Osteoporos*, 18(5), 433-438.

O'Hearn et al. (2017). Modulating the endocannabinoid pathway as treatment for peripheral neuropathic pain: a selected review of preclinical studies. *Annals of palliative medicine*, 6(Suppl 2), S209-S214.

Turcotte et al. (2016). The CB2 receptor and its role as a regulator of inflammation. *Cell Mol Life Sci*. 73(23):4449-4470.

FOR RESEARCH USE ONLY.

Multispan Inc. All rights reserved. No part of this document may be reproduced in any form without prior permission in writing.