

MULTISCREEN™ STABLE CELL LINE HUMAN RECOMBINANT GPR37L1 RECEPTOR

Data sheet

PRODUCT INFORMATION

Catalog Number: C1098

Lot Number: C1098-013006

Quantity: 1 vial (2 x 10⁶) frozen cells

Freeze Medium: Sigma Freezing Medium (C-6164)

Host cell: HEK293T

Transfection: Expression vector containing full-length human GPR37L1 cDNA (GenBank Accession Number NM_004767) with FLAG tag sequence at N-terminus

Recommended Storage: Liquid nitrogen upon receiving

Propagation Medium: DMEM, 10% FBS, 1 µg/mL puromycin

Stability: Stable after two months continuous growth

Background: GPR37L1 (G-protein coupled receptor 37 like 1) is also known as ETBR-LP-2 (Endothelin B receptor-like protein-2) and is an orphan receptor. The receptor is strongly expressed in the human central nervous system, e.g. in cerebellar Bergmann glia, cerebral cortex, and internal capsule fibers. The fragment of this receptor is detectable in human cerebrospinal fluid.

Application: Functional Analysis

Figure 1

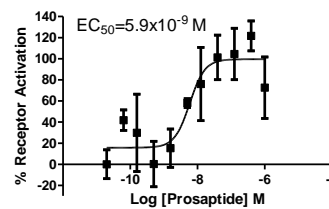


Figure 2

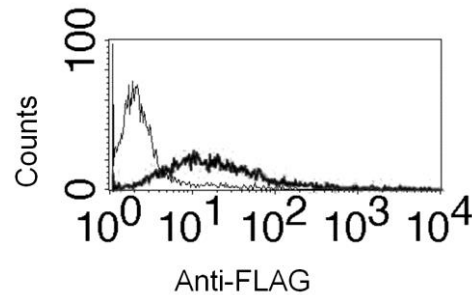


Figure 1. 2. Dose-dependent inhibition of forskolin stimulated intracellular cAMP level upon treatment with ligand, measured with Multiscreen™ TR-FRET cAMP 1.0 No Wash Assay Kit (Multispan MSCM01). **Figure 2.** Receptor expression on cell surface measured by flow cytometry (FACS) using an anti-FLAG antibody. Thin line: parental cells; thick line: receptor-expressing cells.

References:

Valdenaire *et al.* (1998) A new family of orphan G protein-coupled receptors predominantly expressed in the brain. *FEBS Lett* 424:193-196.

Stark *et al.* (2001) Peptide repertoire of human cerebrospinal fluid: novel proteolytic fragments of neuroendocrine proteins. *J Chromatogr B Biomed Sci Appl* 754:357-367.

FOR RESEARCH USE ONLY.

© 2005 Multispan Inc. All rights reserved. No part of this document may be reproduced in any form without prior permission in writing.

www.multispaninc.com
sales@multispaninc.com
support@multispaninc.com

Ver. October 2005

Phone: +1 (510) 887-0817
Fax: +1 (510) 887-0863
26219 Eden Landing Road
Hayward, CA 94545-3718
U.S.A.