

MULTISCREEN™ STABLE CELL LINE DOG RECOMBINANT GIP RECEPTOR

Data sheet

PRODUCT INFORMATION

Catalog Number: Cd1290a

Lot Number: Cd1290a-070819

Quantity: 1 vial (2 x 10⁶) frozen cells

Freeze Medium: : Cellbanker 2
(Amsbio 11891)

Host cell: HEK293T

Transfection: Expression vector containing full-length rhesus monkey GIPR cDNA (GenBank accession number E2RIK5) with FLAG tag sequence at N-terminus

Recommended Storage: Liquid nitrogen upon receiving

Propagation Medium: DMEM, 10% FBS, 1 µg/mL puromycin

Stability: In progress

Background: GIP (gastric inhibitory polypeptide) is released from the gastrointestinal tract, stimulates insulin secretion from pancreatic beta-cells, and plays a crucial role in the regulation of insulin secretion. Its receptor GIPR is expressed in the pancreas, stomach, small intestine, adipose tissue, adrenal cortex, pituitary, heart, testis, endothelial cells, bone, trachea, spleen, thymus, lung, kidney, thyroid, and several regions in the CNS. GIPR may have therapeutic potential in the treatment of type 2 diabetes and obesity.

Application: Functional assays

Figure 1

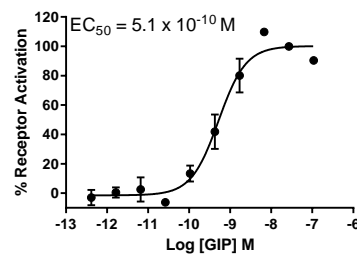


Figure 2

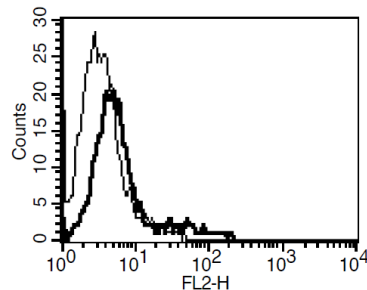


Figure 1. Dose-dependent stimulation of intracellular cAMP accumulation upon treatment with ligand, measured with Multiscreen™ TR-FRET cAMP 1.0 No Wash Assay Kit (Multispan MSCM01). **Figure 2.** Receptor expression on cell surface measured by flow cytometry (FACS) using an anti-FLAG antibody. Thin line: parental cells; thick line: receptor-expressing cells.

References:

Irwin *et al.* (2009) Therapeutic potential for GIP receptor agonists and antagonists. *Best Pract Res Clin Endocrinol Metab* 23:499-512.

Yamada *et al.* (1995) Human gastric inhibitory polypeptide receptor: cloning of the gene (GIPR) and cDNA. *Genomics* 29:773-776.

FOR RESEARCH USE ONLY.

All rights reserved. No part of this document may be reproduced in any form without prior permission in writing.