

MULTISCREEN™ STABLE CELL LINE RAT RECOMBINANT GLP-1 RECEPTOR

Data sheet

PRODUCT INFORMATION

Catalog Number: Cr1267-1

Lot Number: Cr1267-1-010819

Quantity: 1 vial (2×10^6) frozen cells

Freeze Medium: Cellbanker 2

Host cell: CHO-K1

Transfection: Expression vector containing full-length Rat GLP1R cDNA (GenBank Accession Number NM_012728.1) with FLAG tag sequence at N-terminus

Recommended Storage: Liquid nitrogen upon receiving

Propagation Medium: DME/F12, 10% FBS, 10 μ g/mL puromycin

Stability: In progress

Background: Glucagon-like peptide-1 receptor (GLP1R) is a G protein-coupled receptor for the endogenous insulinotropic peptide glucagon-like peptide-1 (GLP-1). GLP1R is expressed in pancreatic cells and the nervous system, and mediate the effects of GLP-1 in regulating glucose homeostasis through multiple mechanisms including direct actions on the endocrine pancreas and indirect activation of central nervous system controlling gastric emptying, satiety, and body weight. In the brain, receptor activation elicits neurotrophic actions through protection against metabolic and oxidative insults. GLP1R is also implicated in plasticity, memory, and learning. Thus, GLP1R is a potential therapeutic target for both cognitive-enhancing and neuroprotective agents and in the treatment of stroke and Parkinsonism.

Application: Functional assays

Figure 1

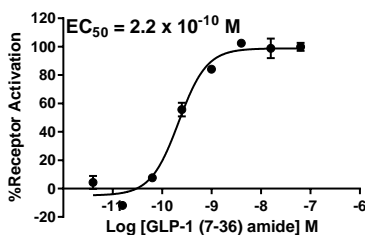


Figure 2

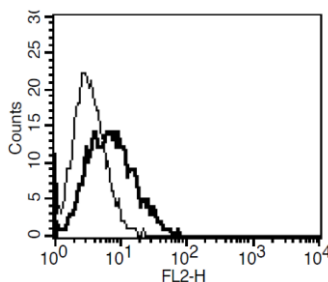


Figure 1. Dose-dependent stimulation of intracellular cAMP accumulation upon treatment with ligand, measured with Multiscreen™ TR-FRET cAMP 1.0 No Wash Assay Kit (Multispan MSCM01). **Figure 2.** Receptor expression on cell surface measured by flow cytometry (FACS) using an anti-FLAG antibody. Thin line: parental cells; thick line: receptor-expressing cells.

References:

During *et al.* (2003) Glucagon-like peptide-1 receptor is involved in learning and neuroprotection. *Nature Med* 9:1173-1179.

Dillon *et al.* (1993) Cloning and functional expression of the human glucagon-like peptide-1 (GLP-1) receptor. *Endocrinology* 133:1907-1910.

Stoffel *et al.* (1993) Human glucagon-like peptide-1 receptor gene: localization to chromosome band 6p21 by fluorescence in situ hybridization and linkage of a highly polymorphic simple tandem repeat DNA polymorphism to other markers on chromosome 6. *Diabetes* 42:1215-1218.

FOR RESEARCH USE ONLY.

Multispan Inc. All rights reserved. No part of this document may be reproduced in any form without prior permission in writing.