

MULTISCREEN™ STABLE CELL LINE MEMBRANE HUMAN RECOMBINANT METABOTROPIC GLUTAMATE MGLUR8 RECEPTOR

Data sheet

PRODUCT INFORMATION

Catalog Number: MC1195

Lot Number: 05/20/2011

Quantity: 1 vial (4.0 mg/mL, 1 mg)

Packaging Buffer: 20 mM Gly-Gly, 1 mM MgCl₂, 25 mM Sucrose (pH 7.2)

Host cell: HEK293T

Transfection: Expression vector containing full-length human mGluR8 cDNA (GenBank Accession Number NM_000845.1) with FLAG tag sequence at N-terminus.

Recommended Storage: Store at -80°C. Avoid repeated freeze-thaw.

Background: The metabotropic glutamate receptors (mGluRs) have been divided into 3 groups on the basis of sequence homology, putative signal transduction mechanisms, and pharmacologic properties. Group II and group III mGluRs are linked to the inhibition of the cyclic AMP cascade, but differ in agonist selectivity. Group III agonists include L-2-amino-4-phosphonobutyrate (L-AP4) and L-serine-O-phosphate. The human mGluR8 protein shares 67 to 70% sequence similarity with mGluR4 and mGluR7 and 99% amino acid identity with mouse mGluR8.

Figure 1

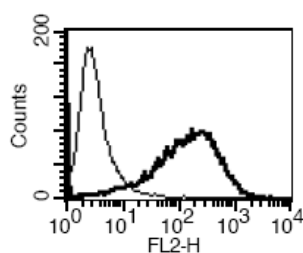


Figure 1. Histogram showing receptor expression on cell surface measured by flow cytometry (FACS) using an anti-FLAG antibody. Thin line: parental cells; thick line: receptor-expressing cells.

References:

Scherer *et al.* (1996) Localization of two metabotropic glutamate receptor genes, GRM3 and GRM8, to human chromosome 7q. *Genomics* 31:230-233.

Scherer *et al.* (1997) The human metabotropic glutamate receptor 8 (GRM8) gene: a disproportionately large gene located at 7q31.3-q32.1. *Genomics* 44:232-236.

FOR RESEARCH USE ONLY.

© 2005 Multispan Inc. All rights reserved. No part of this document may be reproduced in any form without prior permission in writing.

www.multispaninc.com
sales@multispaninc.com
support@multispaninc.com

Ver. October 2005

Phone: +1 (510) 887-0817
Fax: +1 (510) 887-0863
26219 Eden Landing Road
Hayward, CA 94545-3718
U.S.A.