

**MULTISCREEN™ DIVISION ARRESTED CELL LINE
HUMAN RECOMBINANT P2Y13 RECEPTOR**

Data sheet

PRODUCT INFORMATION

Catalog Number: DC1139-3

Lot Number: DC1139-3-060118

Quantity: 1 vial (4×10^6) frozen cells

Freeze Medium: Amsbio Cellbanker 2 (11891)

Host cell: 1321N1

Transfection: Expression vector containing full-length human P2Y13 cDNA (GenBank Accession Number NM_023914) with FLAG tag sequence at N-terminus

Recommended Storage: Liquid nitrogen upon receiving

Propagation Medium: DMEM, 10% FBS

Stability: Stable for 1-2 days after thawing

Background: GPR86 or P2Y13 is a 333-amino acid 7 transmembrane protein that lacks a leader peptide but possesses a DRF motif. Northern blot and PCR analysis has shown GPR86 to be expressed highly in the spleen, with weaker expression in placenta, leukocytes, brain, placenta, lung, liver, spinal cord, thymus, small intestine, uterus, stomach, testis, fetal brain and adrenal gland and no expression in the pancreas, heart, kidney, skeletal muscle, ovary or fetal aorta. Communi et al determined that GPR86 shows a high affinity for ADP through pharmacologic characterization of GPR86-transfected human astrocytoma cells and CHO cells.

Application: Functional assays

Figure 1

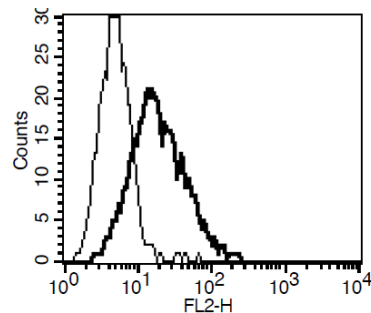


Figure 1. Receptor expression on cell surface measured by flow cytometry (FACS) using an anti-FLAG antibody. Thin line: parental cells; thick line: receptor-expressing cells.

References:

Communi *et al.* (2001) Identification of a novel human ADP receptor coupled to G(i). *J Biol Chem* 276:41479-41485

Lee *et al.* (2001) Discovery and mapping of ten novel G protein-coupled receptor genes. *Gene* 275:83-91.

Wittenberger *et al.* (2001) An expressed sequence tag (EST) data mining strategy succeeding in the discovery of new G-protein coupled receptors. *J Molec Biol* 307:799-813.

FOR RESEARCH USE ONLY.

Multispan Inc. All rights reserved. No part of this document may be reproduced in any form without prior permission in writing.