

MULTISCREEN™ STABLE CELL LINE HUMAN RECOMBINANT GPR85 RECEPTOR

Data sheet

PRODUCT INFORMATION

Catalog Number: C1138

Lot Number: C1138-020817

Quantity: 1 vial (2×10^6) frozen cells

Freeze Medium: 90%FBS, 10% DMSO

Host cell: HEK293T

Transfection: Expression vector containing full-length human GPR85 cDNA (GenBank Accession Number NM_018970.3) with FLAG tag sequence at N-terminus

Recommended Storage: Liquid nitrogen upon receiving

Propagation Medium: DMEM, 10% FBS, 1 μ g/mL puromycin

Stability: In progress

Background: GPR85 (G protein-coupled receptor 85) is also known as SREB2 (Super Conserved Receptor Expressed in Brain 2) and belongs to the family of class A (rhodopsin-like) orphan G protein-coupled receptors. The receptor is reported to be highly expressed in the brain and testis. Research has linked GPR85 to influences of brain size, behavior, and vulnerability to schizophrenia.

Application:

Figure 1

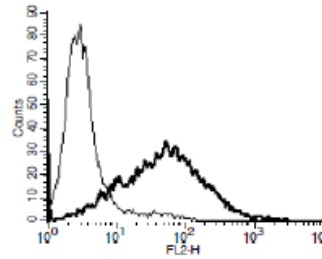


Figure 1. Receptor expression on cell surface measured by flow cytometry (FACS) using an anti-FLAG antibody. Thin line: parental cells; thick line: receptor-expressing cells.

References:

Yanai *et al.* (2016) Identification and molecular docking studies for novel inverse agonists of SREB, super conserved receptor expressed in brain. *Genes to Cells* 21:717-727.

FOR RESEARCH USE ONLY.

All rights reserved. No part of this document may be reproduced in any form without prior permission in writing.