

MULTISCREEN™ STABLE CELL LINE HUMAN RECOMBINANT GPR110 RECEPTOR

Data sheet

PRODUCT INFORMATION

Catalog Number: C1378

Lot Number: C1378-X

Quantity: 1 vial (2×10^6) frozen cells

Freeze Medium: Cellbanker 2

Host cell: HEK293T

Transfection: Expression vector containing full-length human GPR110 cDNA (GenBank accession number NM_153840.2) with FLAG tag sequence at N-terminus

Recommended Storage: Liquid nitrogen upon receiving

Propagation Medium: DMEM, 10% FBS, 1 μ g/mL puromycin

Stability: In progress

Background: GPR110 is an orphan G protein-coupled receptor. In a retroviral insertion mutagenesis screen in mouse, GPR110 has been identified as an oncogene. GPR110 has also been demonstrated as the synaptamide receptor, mediating synaptamide-induced bioactivity in a cAMP-dependent manner.

Application:

Figure 1

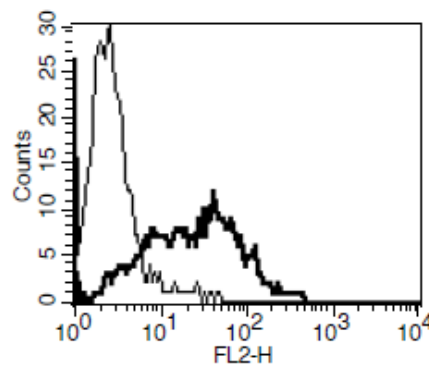


Figure 1. Receptor expression on cell surface measured by flow cytometry (FACS) using an anti-FLAG antibody. Thin line: parental cells; thick line: receptor-expressing cells.

References:

Ji-Won Lee1, *et al.* (2016) Orphan GPR110 (ADGRF1) targeted by N-docosahexaenoyl ethanolamine in development of neurons and cognitive function. *NATURE COMMUNICATIONS*. 7:13123. DOI: 10.1038/ncomms13123.

Amy Lum *et al.* (2010) Orphan receptor GPR110, an oncogene overexpressed in lung and prostate cancer. *BMC Cancer*, 2010, 10:40

Hannah M. Stovekena *et al.* (2003) Adhesion G protein-coupled receptors are activated by exposure of a cryptic tethered agonist. *PNAS*. 6194–6199 May 12, 2015. vol. 112 no. 19

FOR RESEARCH USE ONLY.

Multispan Inc. All rights reserved. No part of this document may be reproduced in any form without prior permission in writing.