

MULTISCREEN™ STABLE CELL LINE HUMAN RECOMBINANT CCR10 RECEPTOR

Data sheet

PRODUCT INFORMATION

Catalog Number: CG1018-1

Lot Number: CG1018-1-042313

Quantity: 1 vial (2×10^6) frozen cells

Freeze Medium: Sigma Freezing Medium (C-6164)

Host cell: CHO-K1 Gαq5

Transfection: Full-length human CCR10 cDNA (GenBank accession Number NM_016602.2) with FLAG tag sequence at N-terminus

Recommended Storage: Liquid nitrogen upon receiving

Propagation Medium: DMEM/F12, 10% FBS, 10 μg/mL puromycin, 250 μg/mL hygromycin

Stability: In progress

Background: CCR10 (also known as GPR2) is selectively expressed by IgA-secreting cells including circulating IgA+ plasmablasts, as well as almost all IgA+ plasma cells in the salivary gland, small intestine, large intestine, appendix and tonsils. It is a receptor for CCL27/CTACK and CCL28/MEC. Expression of CCL27 in skin may play an important role in facilitating memory T cells that express CCR10 to enter into cutaneous sites during inflammation and in determining the metastatic destination of malignant melanoma.

Application: Functional assays

Figure 1

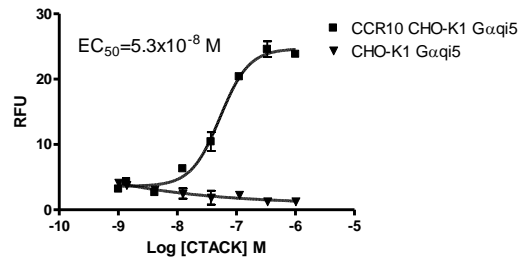


Figure 2

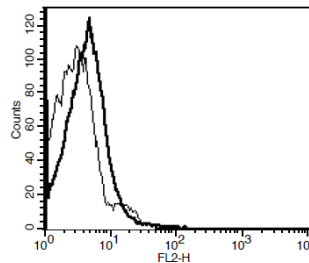


Figure 1. Dose-dependent stimulation of calcium flux upon treatment with ligand, measured with Multiscreen™ Calcium 1.0 No Wash Assay Kit (Multispan MSCA01).

Figure 2. Receptor expression on cell surface measured by flow cytometry (FACS) using an anti-FLAG antibody. Thin line: parental cells; thick line: receptor-expressing cells.

References:

Muller *et al.* (2001) Involvement of chemokine receptors in breast cancer metastasis. *Nature* 410:50-56.

Kunkel *et al.* (2003) CCR10 expression is a common feature of circulating and mucosal epithelial tissue IgA Ab-secreting cells. *J Clin Invest* 111:1001-1010.

Hudak *et al.* (2002) Immune surveillance and effector functions of CCR10(+) skin homing T cells. *J Immunol* 169:1189-1196.

FOR RESEARCH USE ONLY.

Multispan Inc. All rights reserved. No part of this document may be reproduced in any form without prior permission in writing.