

**MULTISCREEN™ DIVISION ARRESTED TRANSIENT POLYCLONAL POOL  
HUMAN RECOMBINANT CCR10 RECEPTOR**

**Data sheet**

**PRODUCT INFORMATION**

**Catalog Number:** DC1018

**Lot Number:** DC1018-031519

**Quantity:** 1 vial ( $4 \times 10^6$ ) frozen cells

**Freeze Medium:** Cellbanker 2  
(Amsbio)

**Host cell:** HEK293T

**Transfection:** Full-length human CCR10 cDNA (GenBank accession Number NM\_016602.2) with FLAG tag sequence at N-terminus

**Recommended Storage:** Liquid nitrogen upon receiving

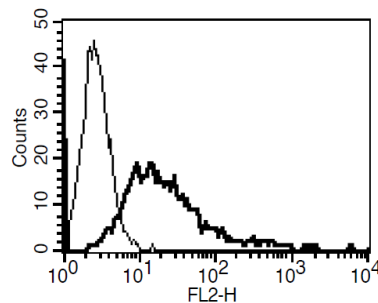
**Propagation Medium:** DMEM, 10% FBS

**Stability:** Stable for 1-2 days after thawing

**Background:** CCR10 (also known as GPR2) is selectively expressed by IgA-secreting cells including circulating IgA+ plasmablasts, as well as almost all IgA+ plasma cells in the salivary gland, small intestine, large intestine, appendix and tonsils. It is a receptor for CCL27/CTACK and CCL28/MEC. Expression of CCL27 in skin may play an important role in facilitating memory T cells that express CCR10 to enter into cutaneous sites during inflammation and in determining the metastatic destination of malignant melanoma.

**Application:** Functional assays

**Figure 1**



**Figure 1.** Receptor Expression on cell surface measured by flow cytometry (FACS) using an anti-FLAG antibody. Thin line: parental cells; thick line: receptor-expressing cells.

**References:**

Muller *et al.* (2001) Involvement of chemokine receptors in breast cancer metastasis. *Nature* 410:50-56.

Kunkel *et al.* (2003) CCR10 expression is a common feature of circulating and mucosal epithelial tissue IgA Ab-secreting cells. *J Clin Invest* 111:1001-1010.

Hudak *et al.* (2002) Immune surveillance and effector functions of CCR10(+) skin homing T cells. *J Immunol* 169:1189-1196.

**FOR RESEARCH USE ONLY.**

Multispan Inc. All rights reserved. No part of this document may be reproduced in any form without prior permission in writing.