

**MULTISCREEN™ STABLE CELL LINE
HUMAN RECOMBINANT CALCRL RECEPTOR**

Data sheet

PRODUCT INFORMATION

Catalog Number: C1232-1

Lot Number: C1232-1-90717

Quantity: 1 vial (2×10^6) frozen cells

Freeze Medium: Sigma Freezing Medium (C-6164)

Host cell: CHO-K1

Transfection: Full-length Human CALCRL cDNA (GenBank Accession Number NM_005795) with FLAG-tag sequence at the N-terminus

Recommended Storage: Liquid nitrogen upon receiving

Propagation Medium: DME/F12, 10% FBS, 10 μ g/mL puromycin

Stability: Stable in culture for minimum of two months

Background: CALCRL (Calcitonin gene-related peptide type 1 receptor) is a receptor for calcitonin-gene-related peptide (CGRP) in the presence of the receptor activity modifying protein 1 (RAMP1) and receptor for adrenomedullin in the presence of RAMP2 or RAMP3. CALCRL is predominantly expressed in the lung and heart. The receptor is considered as a potential target for anti-migraine drugs.

Application: Functional assays

Figure 1

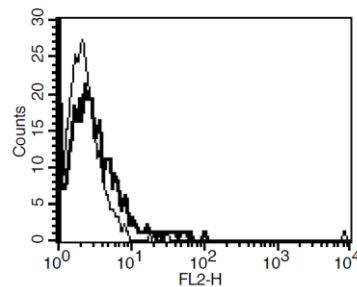


Figure 1. Receptor expression on cell surface measured by flow cytometry (FACS) using an anti-FLAG antibody. Thin line: parental cells; thick line: receptor-expressing cells.

References:

Aiyar *et al.* (1996) A cDNA encoding the calcitonin gene-related peptide type 1 receptor. *J Biol Chem* 271:11325-11329.

Mitsikostas and Sanchez del Rio (2001) Receptor systems mediating c-fos expression within trigeminal nucleus caudalis in animal models of migraine. *Brain Res Brain Res Rev* 35:20-35.

FOR RESEARCH USE ONLY.

All rights reserved. No part of this document may be reproduced in any form without prior permission in writing.