

**MULTISCREEN™ MEMBRANE PREPARATION  
HUMAN RECOMBINANT  $\beta$ 2 ADRENERGIC RECEPTOR**

**Data sheet**

**PRODUCT INFORMATION**

**Catalog Number:** MC1438-1a

**Lot Number:** MC1438-1a-08032012

**Quantity:** 8.0 mg/ml, 1mg

**Packaging Buffer:** 20 mM Gly-Gly, 1 mM MgCl<sub>2</sub>, 250 mM Sucrose

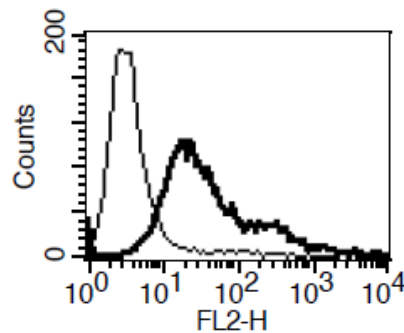
**Host cell:** CHO-K1

**Transfection:** Expression vector containing full-length human ADRB2 cDNA (GenBank Accession Number NM\_000024) with FLAG tag sequence at N-terminus

**Recommended Storage:** Liquid nitrogen upon receiving

**Background:** Norepinephrine is implicated in a wide range of physiological processes through activation of nine different G-protein-coupled receptors ( $\alpha$ 1a,  $\alpha$ 1b,  $\alpha$ 1d,  $\alpha$ 2a,  $\alpha$ 2b,  $\alpha$ 2c,  $\beta$ 1,  $\beta$ 2,  $\beta$ 3). The human  $\beta$ 2-adrenergic receptor was the first 7-transmembrane receptor for a hormone or neurotransmitter to have its crystal structure solved. It has been suggested that the  $\beta$ 2-adrenoceptor may form homodimers as well as oligomers with other receptors. The  $\beta$ 2-adrenoceptor mediates the actions of catecholamines in multiple tissues. They are responsible for relaxation of vascular, uterine, and airway smooth muscle, and are involved in metabolic and endocrine functions.

**Figure 1**



**Figure 1.** Receptor expression on cell surface measured by flow cytometry (FACS) using an anti-FLAG antibody. Thin line: parental cells; thick line: receptor-expressing cells.

**References:**

Kobilka *et al.* (1987) cDNA for the human beta 2-adrenergic receptor: a protein with multiple membrane-spanning domains and encoded by a gene whose chromosomal location is shared with that of the receptor for platelet-derived growth factor. *Proc Natl Acad Sci USA* 84:46-50.

Frielle *et al.* (1989) Properties of the beta 1- and beta 2-adrenergic receptor subtypes revealed by molecular cloning. *Clin Chem* 35:721-725.

**FOR RESEARCH USE ONLY.**

© 2005 Multispan Inc. All rights reserved. No part of this document may be reproduced in any form without prior permission in writing.

www.multispaninc.com  
sales@multispaninc.com  
support@multispaninc.com

Ver. October 2005

Phone: +1 (510) 887-0817  
Fax: +1 (510) 887-0863  
26219 Eden Landing Road  
Hayward, CA 94545-3718  
U.S.A.