

## MULTISCREEN™ STABLE CELL LINE HUMAN RECOMBINANT MGLU1 RECEPTOR

### Data sheet

#### PRODUCT INFORMATION

**Catalog Number:** C1188-1

**Lot Number:** C1188-1-040110

**Quantity:** 1 vial ( $2 \times 10^6$ ) frozen cells

**Freeze Medium:** Sigma Freezing Medium (C-6164)

**Host cell:** CHO-K1

**Transfection:** Expression vector containing full-length human GRM1 cDNA (Accession Number NM\_000838) with FLAG tag sequence at N-terminus

**Recommended Storage:** Liquid nitrogen upon receiving

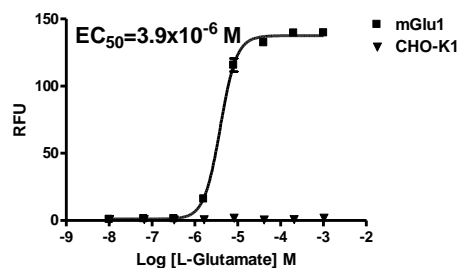
**Propagation Medium:** DMEM with GlutaMAX (Gibco 10566), 10% FBS (dialyzed), 2 mM sodium pyruvate, 10  $\mu$ g/mL puromycin

**Stability:** Stable in culture for minimum of two months

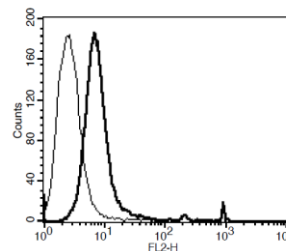
**Background:** The neurotransmitter L-glutamate interacts with both ionotropic and metabotropic receptors. The metabotropic glutamate receptors (mGluRs), which are G protein-coupled receptors, have been divided into 3 groups on the basis of sequence homology, putative signal transduction mechanisms, and pharmacologic properties. Group II and group III mGluRs are linked to the inhibition of the cyclic AMP cascade, but differ in their agonist selectivity.

**Application:** Functional assays

**Figure 1**



**Figure 2**



**Figure 1.** Dose-dependent stimulation of calcium flux upon treatment with ligand, measured with Multiscreen™ Calcium 1.0 No Wash Assay Kit (Multispan MSCA01).

**Figure 2.** Receptor expression on cell surface measured by flow cytometry (FACS) using an anti-FLAG antibody. Thin line: parental cells; thick line: receptor-expressing cells.

#### References:

Scherer *et al.* (1996) Localization of two metabotropic glutamate receptor genes, GRM3 and GRM8, to human chromosome 7q. *Genomics* 31:230-233.

Scherer *et al.* (1997) The human metabotropic glutamate receptor 8 (GRM8) gene: a disproportionately large gene located at 7q31.3-q32.1. *Genomics* 44:232-236.

**FOR RESEARCH USE ONLY.**

Multispan Inc. All rights reserved. No part of this document may be reproduced in any form without prior permission in writing.