

**MULTISCREEN™ STABLE CELL LINE
HUMAN RECOMBINANT S1P3 RECEPTOR**

Data sheet

PRODUCT INFORMATION

Catalog Number: C1049-6

Lot Number: C1049-6-080408

Quantity: 1 vial (2×10^6) frozen cells

Freeze Medium: Sigma Freezing Medium (C-6164)

Host cell: RH7777

Transfection: Expression vector containing full-length human S1P3 cDNA (GenBank Accession Number NM_005226.2) with FLAG tag sequence at N-terminus

Recommended Storage: Liquid nitrogen upon receiving

Propagation Medium: DMEM, 10% FBS, 3 μ g/mL puromycin

Stability: Stable in culture for minimum of two months

Background: S1P3 (sphingosine 1-phosphate receptor 3) or EDG3 (endothelial differentiation G-protein coupled receptor 3) is a receptor for the lysosphingolipid sphingosine 1-phosphate, a bioactive lysophospholipid that elicits diverse physiological effect on most types of cells and tissues. EDG receptors mediate pro-angiogenic activities, such as endothelial cell proliferation, chemotaxis, and vessel morphogenesis. S1P3, along with S1P1, is required for directing the organization of endothelial cells into capillary networks.

Application: Functional assays

Figure 1

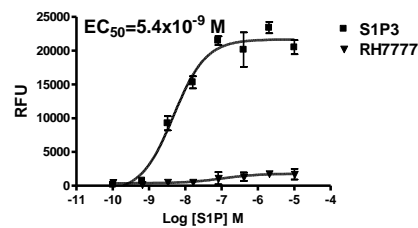


Figure 2

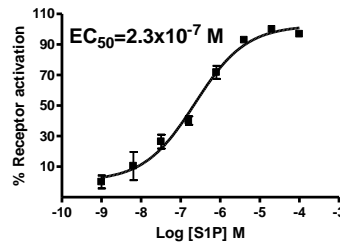
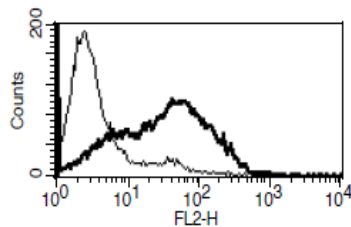


Figure 1. Dose-dependent stimulation of calcium flux upon treatment with ligand, measured with Multiscreen™ Calcium 1.0 No Wash Assay Kit (Multispan MSCA01). **Figure 2.** Dose-dependent accumulation of intracellular IP1 upon treatment with ligand, measured with IP-one Tb kit (Cisbio 62IPAPEC). **Figure 3.** Receptor expression on cell surface measured by flow cytometry (FACS) using an anti-FLAG antibody. Thin line: parental cells; thick line: receptor-expressing cells.

Figure 3



References:

Takuwa *et al.* (2001) Subtype-specific, differential activities of the EDG family receptors for sphingosine-1-phosphate, a novel lysophospholipid mediator. *Mol Cell Endocrinol* 177:3-11.

FOR RESEARCH USE ONLY.

Multispan Inc. All rights reserved. No part of this document may be reproduced in any form without prior permission in writing.