

**MULTISCREEN™ MEMBRANE PREPARATION
HUMAN RECOMBINANT GHRELIN RECEPTOR**

Data sheet

PRODUCT INFORMATION

Catalog Number: MC1197b

Lot Number: MC1197b-09202011

Quantity: 1 vial (7.1mg/ml, 50ul)

Host cell: HEK293T

Transfection: Full-length mouse Ghsh cDNA (GenBank Accession Number NM_198407.1) with FLAG-tag sequence at the N-terminus

Recommended Storage: Liquid nitrogen

Background: The ghrelin receptor is the target of growth hormone secretagogues, a class of synthetic peptide and non-peptide compounds that stimulate growth hormone (GH) release from the anterior pituitary. Ghrelin, the endogenous ligand for the ghrelin receptor, is predominantly secreted from X/A-like cells within the gastric mucosa and may be the source of the majority of circulating plasma ghrelin. Ghrelin stimulates gastric acid secretion and motility, and may have significant effects on appetite and energy. It is not only important for the acute regulation of food intake but also plays an important role in the regulation of long term energy homeostasis. Ghrelin has a number of actions in cardiovascular system, consistent with the localization of receptors to cardiovascular tissue.

**Application:
Radioligand Binding Assay**

Figure 1

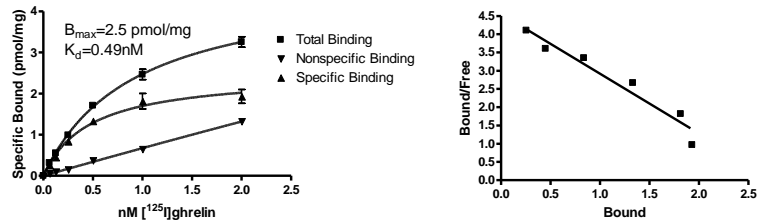


Figure 2

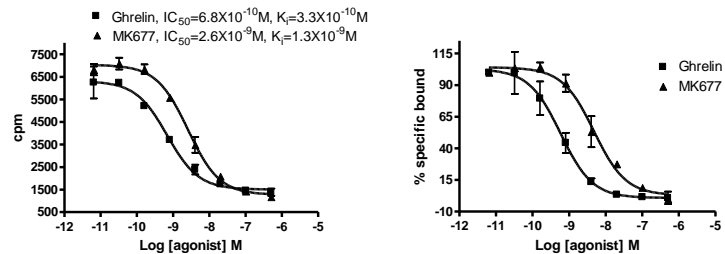


Figure 3

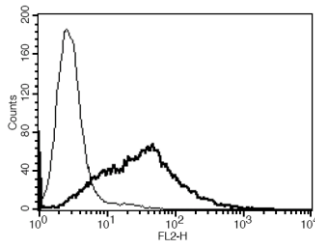


Figure 1. Saturation binding assay curve: Specific binding obtained with ghrelin membrane with [¹²⁵I]Ghrelin. Scatchard plot showed that there is one binding site. **Figure 2. Competition binding assay curve:** Dose-dependent competition of agonists for [¹²⁵I]Ghrelin 0.5nM. **Figure 3.** Receptor expression on cell surface measured by flow cytometry (FACS) using an anti-FLAG antibody. Thin line: parental cells; thick line: receptor-expressing cells.

References:

Howard *et al.* (1996) A receptor in pituitary and hypothalamus that functions in growth hormone release. *Science* 273:974-977.

Kojima and Kangawa (2005) Ghrelin: structure and function. *Physiol Rev* 85:495-522.

van der Lely *et al.* (2004) Biological, physiological, pathophysiological, and pharmacological aspects of ghrelin. *Endocr Rev* 25:426-457.

FOR RESEARCH USE ONLY.

© 2005 Multispan Inc. All rights reserved. No part of this document may be reproduced in any form without prior permission in writing.

www.multispaninc.com
sales@multispaninc.com
support@multispaninc.com

Ver. October 2005

Phone: +1 (510) 887-0817
Fax: +1 (510) 887-0863
26219 Eden Landing Road
Hayward, CA 94545-3718
U.S.A.