

## MULTISCREEN™ MEMBRANE PREPARATION HUMAN RECOMBINANT LPA2 (EDG4) RECEPTOR

### Data sheet

#### PRODUCT INFORMATION

**Catalog Number:** MC1050-6

**Lot Number:** MC1050-6-02102012

**Quantity:** 1 vial (6.1 mg/ml)

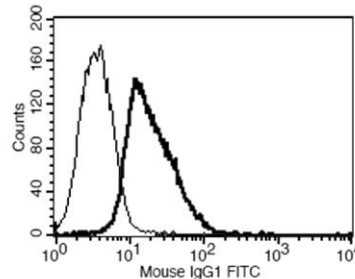
**Host cell:** RH7777

**Transfection:** Expression vector containing full-length human EDG4 cDNA (GenBank Accession Number NM\_004720.4) with FLAG tag sequence at N-terminus

**Recommended Storage:** Liquid nitrogen

**Background:** The lysophosphatidic acid receptor LPA2 or endothelial differentiation, G-protein coupled receptor 4(EDG-4) is expressed most abundantly in testes and peripheral blood leukocytes. It is reported to be a distinctive functional marker for ovarian carcinoma.

**Figure 1**



**Figure 1.** Receptor expression on cell surface measured by flow cytometry (FACS) using an anti-FLAG antibody. Thin line: parental cells; thick line: receptor-expressing cells.

#### References:

Huang *et al.* (2002) Lysophospholipid mediators of immunity and neoplasia. *Biochim Biophys Acta* 1582:161-167.

An *et al.* (1998) Characterization of a novel subtype of human G protein coupled receptor for lysophosphatidic acid. *J Biol Chem* 273:7906-7910.

**FOR RESEARCH USE ONLY.**

© 2005 Multispan Inc. All rights reserved. No part of this document may be reproduced in any form without prior permission in writing.

www.multispaninc.com  
sales@multispaninc.com  
support@multispaninc.com

Ver. October 2005

Phone: +1 (510) 887-0817  
Fax: +1 (510) 887-0863  
26219 Eden Landing Road  
Hayward, CA 94545-3718  
U.S.A.